

Pickup The Crew Manual

Welcome to Pickup The Crew!

Running the Game

Unzip the package you've downloaded and double click on "PickupTheCrew.exe", which is located in the "Game" folder.

You are now running Pickup The Crew.

How to Play

When the game first loads, the 'Attract' screen is displayed. Press the up arrow key to begin the game.

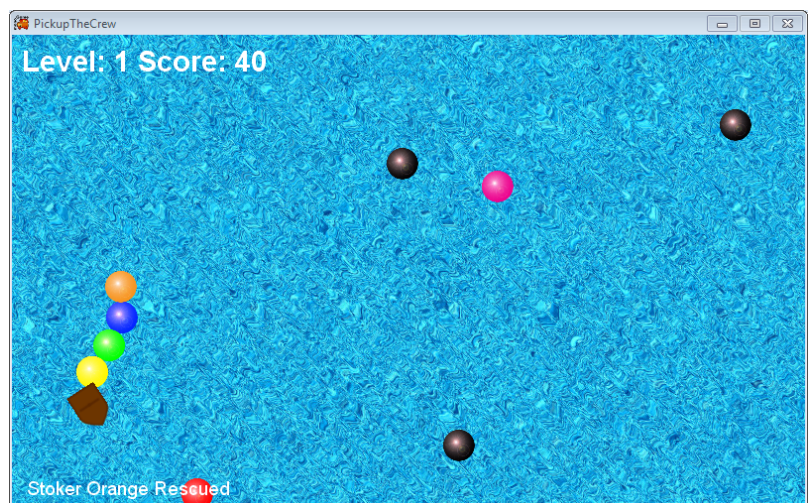
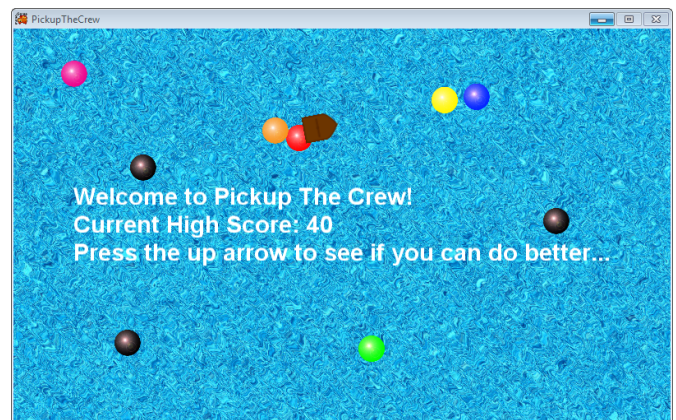
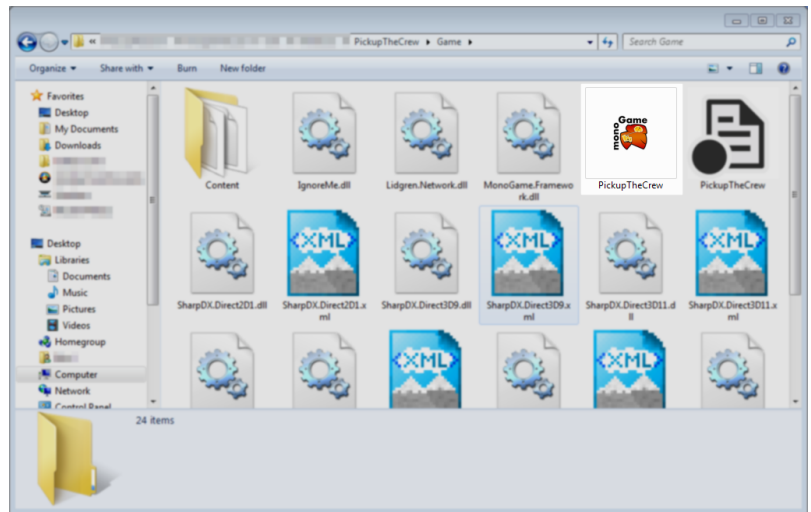
You control the esteemed "Captain White" of the good ship "Sink Easy" (which probably wasn't a good name at all). All your crew members (represented by the coloured balls) have fallen overboard and you now have to go and save them.

You can control your ship by using the <up> arrow key to move forwards, and the <left> and <right> arrow keys to turn left and right. You cannot move backwards.

The goal of the game is to rescue all your crew members without anyone getting eaten by a shark (denoted by the black balls). Since your ship sank, all you have left is a small lifeboat which isn't big enough for everyone to fit in. Never fear though, because your crew will hold onto a long rope you have brought along with you for just such an occasion, creating a kind of "snake" behind your lifeboat.

If you manage to save all the crew members, you will go onto the next level - which has more sharks which swim faster. You can start the next level by pressing <space>.

If anyone gets eaten by a shark, it is game over. Press <space> to go back to the "Attract" screen.



You can save the game at any time by pressing <S> on your keyboard. When you open the game again after saving, your previous save will be loaded automatically. Should you wish to delete your old save, simply delete the “PickUpTheCrew.savegame” file that the game created in the “Game” folder.

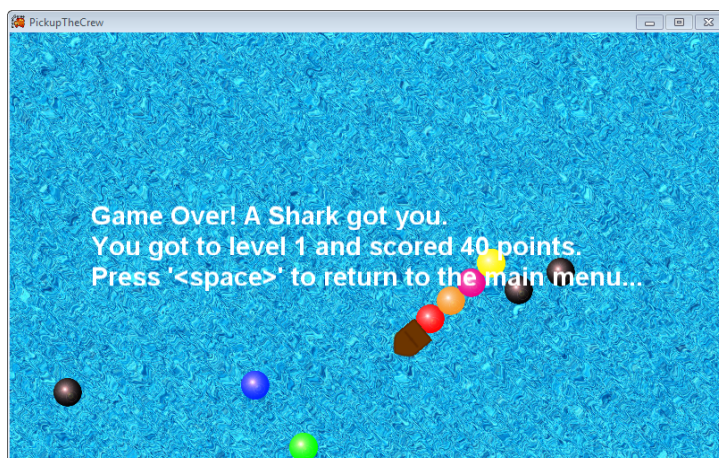
Annotated Screenshot



1. This tells you what level you are on.
2. This shows your current score.
3. This is the last event to occur. It will change to tell you what is happening (e.g. when you rescue a crew member this message will tell you his name).
4. This is Captain White. Control him with the arrow keys.
5. This is a shark. you should avoid them at all costs.
6. This is just one of the 6 crew members who just happens to be “Able Seaman Shocking Pink”.

Below Left: The game over screen...

Below Right: A reference as to which keys do what.



	Move Forwards / Begin Level
	Turn Left
	Turn Right
	Save Game
	Next Level / End Game